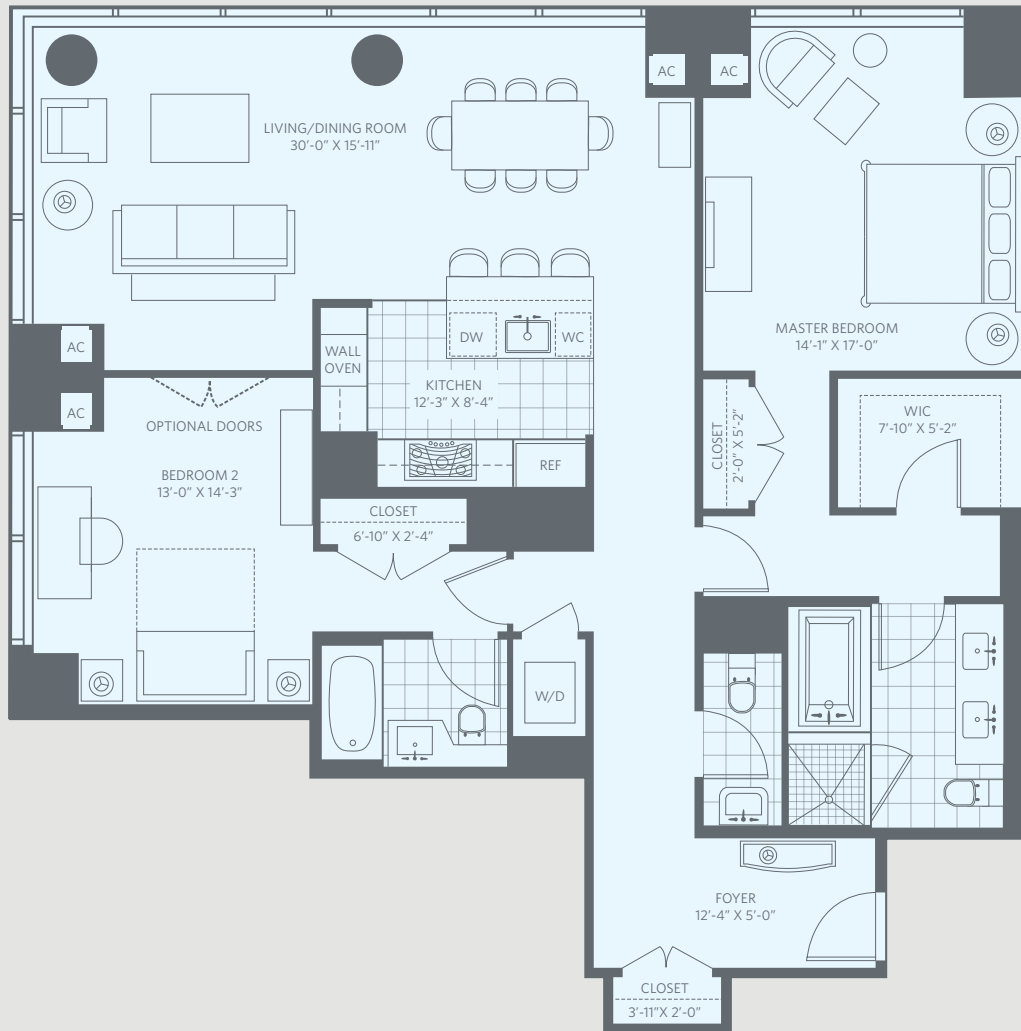


F

RESIDENCE F

2 Bedrooms - 2 ½ Baths
1,655 sq. ft. (Floors 5- 45)



THE RESIDENCES®
AT THE RITZ-CARLTON, PHILADELPHIA

ASSOCIATION FEES: \$ 1,631/ mo

Includes: common area maintenance, air conditioning, heating, water, sewer, gas; use of health club, pool & hot tub, yoga/pilates room, residents' lounge with outdoor terrace, private garden and chauffeur service

Full access to all Ritz-Carlton hotel services

REAL ESTATE TAXES: \$ 719/ yr

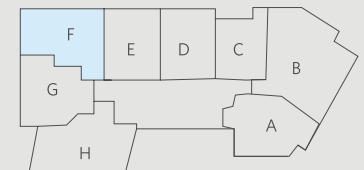
(Amount per tax abatement)

ADDITIONAL RESIDENT RESPONSIBILITIES:

Electricity, telecommunications and à la carte services



South Penn Square



ALL DIMENSIONS ARE APPROXIMATE. THE FLOORPLANS ARE SUBJECT TO CHANGE WITHOUT NOTICE. THE SELLER RESERVES THE ABSOLUTE RIGHT, IN ITS SOLE JUDGMENT AND DISCRETION, TO SUBSTITUTE APPLIANCES, MATERIALS, FIXTURES AND EQUIPMENT OF EQUAL OR GREATER QUALITY OR VALUE FOR THOSE SPECIFIED. THE RESIDENCES AT THE RITZ-CARLTON, PHILADELPHIA ARE NOT OWNED, DEVELOPED OR SOLD BY THE RITZ-CARLTON HOTEL COMPANY, L.L.C. AGC PARTNERS, LP USES THE RITZ-CARLTON MARKS UNDER LICENSE FROM THE RITZ-CARLTON HOTEL COMPANY L.L.C.

215.851.8000

www.PhiladelphiaResidences.com